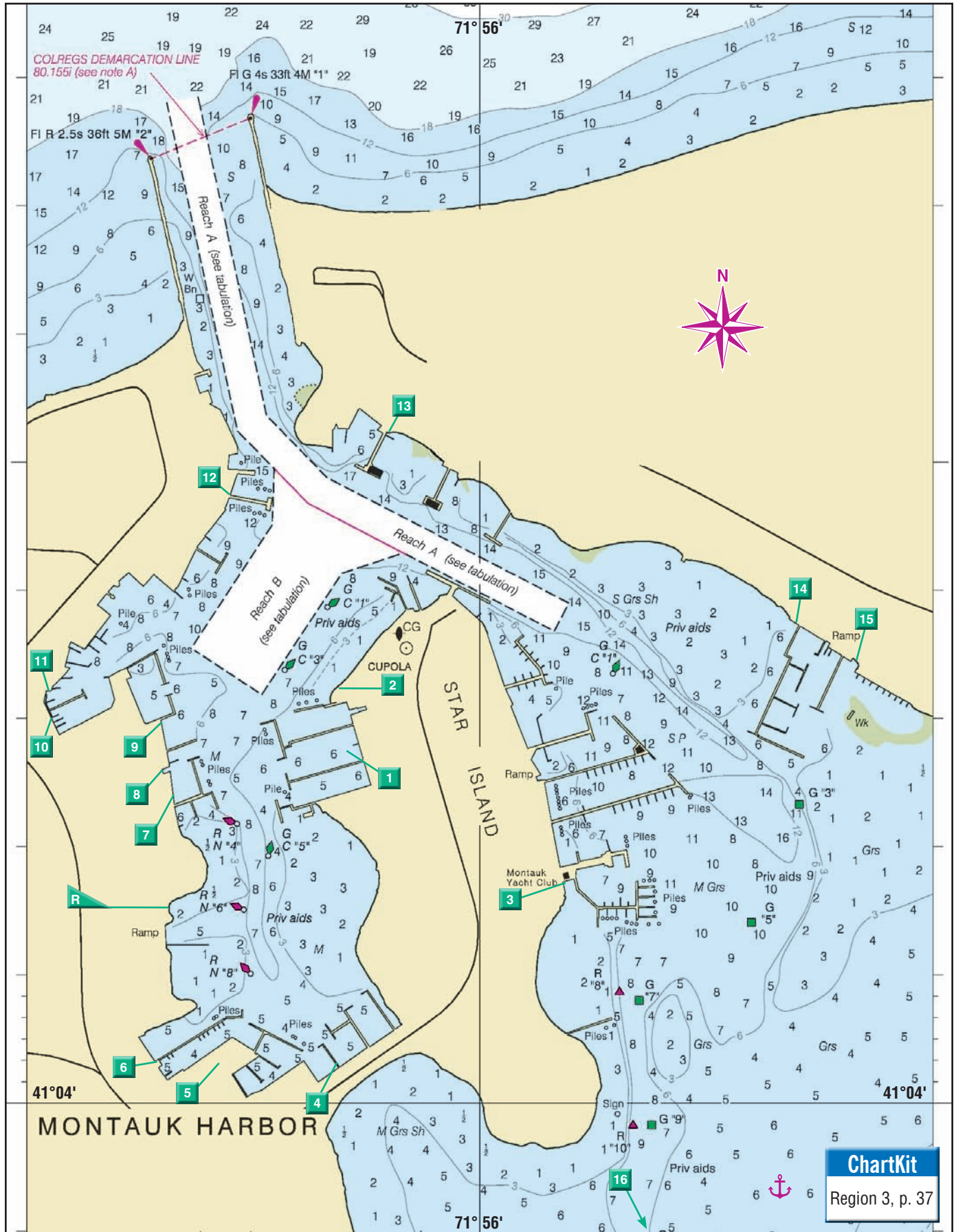


Montauk and Napeague Harbors



© MAPTECH / NOAA CHART 13209 / SCALE 1:7,500 / CORRECTED THROUGH NOTICE TO MARINERS 3/1/14

Montauk and Napeague Harbors

Locals call it “The End,” and with good reason. Located 110 miles from New York City, this is indeed the eastern terminus of marvelous Long Island. An oceanfront playground sporting more than 5,000 acres of pristine public beaches and breathtakingly diverse parkland, the story here began some 1.8 million years ago when glaciers crept south and pushed mineral-rich mounds of rocks and soil with them.

Montauk Point, the southern “fluke” of the whale’s tail of Long Island’s East End, is what geologists call a terminal moraine: a heavy load of sedimentary rock bulldozed and then abandoned by the retreating glaciers. The pebbly beaches on the north side and high, sandy south side dunes are both inspiring.

In addition to leaving behind rocky rifts and sandy ocean beaches, those melting glaciers deposited layers of fertile soil farmed by the native Montauketts. In 1648, European settlers from Massachusetts also appreciated the point’s richness, and the vast meadowlands soon overflowed with flocks of sheep and herds of cattle driven here from eastern Long Island along



Montauk is a fishing paradise.

Old Montauk Highway. Founded in 1658, Deep Hollow Ranch remains the birthplace of the American cowboy and America’s oldest cattle ranch. You can see for yourself and ride the trails of the pre-Revolutionary War pioneers.

SEATOW 800-4-SEATOW		DOCKAGE		SERVICES				SUPPLIES			AMENITIES				SPURS Line Cutter 1-800-824-5172 www.spursmarine.com					
Marine Facilities and Services 1 2 3		Approach / Working VHF Channel	Offers Transient Slips / Moorings	Hookups: Water / Phone / Cable TV	Rail / Lift / Crane / Maximum Amps	Diesel / Wood / Fiberglass / Electronics	Repairs: Prop / Sail / Rigging / Gas	Restrooms / Showers / Laundry / Pump-out	Restrooms / Showers / Laundry / Pump-out	Marine / Groceries / Ice / Bait	Gas / Diesel	Fuel Brand	Internet / Restaurant / Snack Bar	Hotel / Pool / Tennis / Golf	MasterCard / VISA / Discover / AmEx					
1	Star Island Yacht Club	631-668-5052	9/10	115/	Y/	S	170	7/7	All	◆▲100	D	L70	PGDFE	GD	All	RSL	P	All	All	
2	East Hampton Town Pumpout Station	631-329-3078	/73			S	40	8/8		SELF SERVICE										
3	Montauk Yacht Club Resort & Marina p.13-14	631-668-3100	9/11	232/	Y/	S	200	12/6	All	◆▲■100	D				I	RSL	HPT	All	All	
4	Snug Harbor Motel & Marina p.304	631-668-2860	16/9	80/	Y/	S	50	8/5	WC	◆50						RSL	HP		All	
5	Westlake Marina p.306	631-668-5600	/19	100/	Y/	S	45	6/6	W	◆▲50					MIB	RS		R	All	
6	Diamond Cove Marina	631-668-6592	19/19	70/	Y/		52	4/3	W	◆▲50		L40	PGDWFE		MIB	RS		All	All	
7	Offshore Sports Marina	631-668-2406		40/	Y/	S	62	9/9	All	◆▲50		L50	PGDWFE	GD	Ind	MIB	RSL		MV	
8	Sportsman’s Dock	631-668-5348		32/	Y/	S	100	7/6	All	◆▲50					I	RSL				
9	Montauk Marine Basin	631-668-5900	19/19	120/	Y/		140	6/6	WC	◆▲50		L70	PGDWFE	GD	All	RSL		I	All	
10	Uihlein’s Boat Rental & Marina	631-668-3799	16/14	40/	Y/		48	15/5	W	◆▲50		L25	PGWF	G	MIB	RSP	H	All	All	
11	Viking Fleet	631-668-5700								EXCURSION VESSELS										
12	Gosman’s Dock	631-668-2447				S	60	12/12		PRIVATE DOCK; WHOLESALE AND RETAIL FISHMARKETS								RS	All	
13	Inlet Seafood Restaurant	631-668-4272			Y/					DOCK-AND-DINE						I			R	MVA
14	Gone Fishing Marina	631-668-3232	19/18	180/	Y/	S	50	6/6	WC	◆▲50	RD	LCT35	PGDFE	GD	All	All		IR	All	
15	Rick’s Crabby Cowboy Cafe & Marina	631-668-3200		22/	Y/	S	60	6/6	W	▲50						RS		IR	MV	
16	Montauk Lake Club & Marina	631-668-5705	16/12	104/6	Y/Y	S	130	8/8	All	◆▲■100	D			GD	I	RSL	HP	IR	All	

Montauk and Napeague Harbors

One of the most celebrated horsemen was none other than Theodore Roosevelt and his Rough Riders (and 25,000 soldiers), who camped here under quarantine in 1898 after fighting the Spanish in Cuba.

It's impossible to visit Montauk and not find some soul-restoring pleasure gazing to seaward, and in 1926, developer Carl Fisher paid \$2.5 million for 9,700 acres of land with 9 miles of choice waterfront property. Fisher envisioned this as the next Miami Beach, the best-known of his creations. He planned the golf course, the Montauk Yacht Club, the Manor Hotel, and his high-rise office building in town. His master plan also included cutting a channel from fresh-water Lake Montauk to Block Island Sound. He believed this venture would bring boats into Star Island, where he wanted to put a casino, marina, yacht club, and surf club. The 1929 stock-market crash decimated Fisher's development company as well as his dreams, but his legacy remains, as do the Manor Hotel (now a private residence), the Fisher Building, and a harbor bursting with marinas and sportfishing boats.

On the beaches surrounding the village, you may still find old bottles of liquor stashed in the dunes, left behind by rum runners, but don't bet on finding any of Capt. Kidd's treasure, which legend insists lies somewhere in Money Pond.

Although there is plenty to see and do in this, Long Island's best-known port, Montauk is renowned as the unofficial sportfishing capital of the Northeast. In season here anglers catch stripers, fluke, blues, false albacore, codfish, tilefish, weakfish, blackfish, sea bass, porgy, tuna, shark and marlin, among other monsters of the deep. Once a traditional fishing

community featuring gruff and grizzled captains, mates and dockhands, today the harbor has a more genteel, even touristy feel. While you'll find fishing boats of all sorts and sizes — it remains the state's largest commercial fishing port — you'll also see a large fleet of pleasure boaters tucked into slips at the Snug Harbor Motel and Marina or alongside shiny sportfishing boats at Star Island Yacht Club, all rich with history and brimming with folks who can tell a good sea story. This is, after all, the port that the late shark hunter Captain Frank Mundus called home for decades.

Tempered, perhaps, by the opulence of the ritzy Hamptons, the large-scale investment in resort marinas, and the ever-increasing length, value, and number of its pleasure fleet, Montauk remains a fun and magical port with an upscale but hard-working atmosphere.

Even touristy Montauk Village, a 3-mile trek from the harbor and the jumping-off spot for a visit to Montauk's famed lighthouse, seems more laid-back and industrious than points west in East Hampton Township.

Things to See and Do

It's a 9-mile stretch from the eastern shore of Napeague Harbor around the point to **Montauk Point Lighthouse**. That's a lot of area to cover, but don't fret; all the boating facilities here are concentrated within relatively quaint Lake Montauk. This man-made harbor, once a fresh-water pond and thus not particularly deep if you stray outside the channels, is surrounded by an assortment of marinas, restaurants and convenience stores.

© SHORELINE AERIAL PHOTOGRAPHY



The straightforward entrance to Montauk Harbor lies between two stone breakwaters.

Montauk and Napeague Harbors

You'll need wheels to visit the village of Montauk or gaze down from the top of the lighthouse. From July 4th to Labor Day, you can hop aboard the **Suffolk County Transit** (631-852-5200) bus 10C/S94, which runs a loop around Montauk and into East Hampton. You can also take a ride with **Lindy's Taxi** (631-668-8888) or rent bicycles at **Montauk Bike Shop** (631-668-8975). It's about 6 miles from the village to Montauk Point Lighthouse.

Speaking of the lighthouse, this is the oldest in New York State, its construction authorized by President George Washington in 1792. From the top, on a clear day, you can see more than 40 miles out over the ocean. The **Montauk Point Lighthouse Museum** (631-668-2544) is your starting point. Located right at "the point," it has a keeper's house, old documents and photographs, plus an assortment of Fresnel lenses on display. You'll need to climb 137 steps to reach the top of the lighthouse, but the view is worth the effort.

On your return to Montauk Harbor, stop at the oldest cattle ranch in America, **Deep Hollow Ranch** (631-668-2744). This 4,000-acre spread provides plenty of room to giddy-up on rustic trails, rolling meadows, and the beach, and you can follow it all up with a great dinner.

Rita's Stable (631-668-5453), a mile east of Montauk Village, offers similar entertainment: trail rides and pony rides. Rita's has lots of other animals for the kids (and you) to enjoy, including peacocks, pygmy goats, sheep and bunnies.

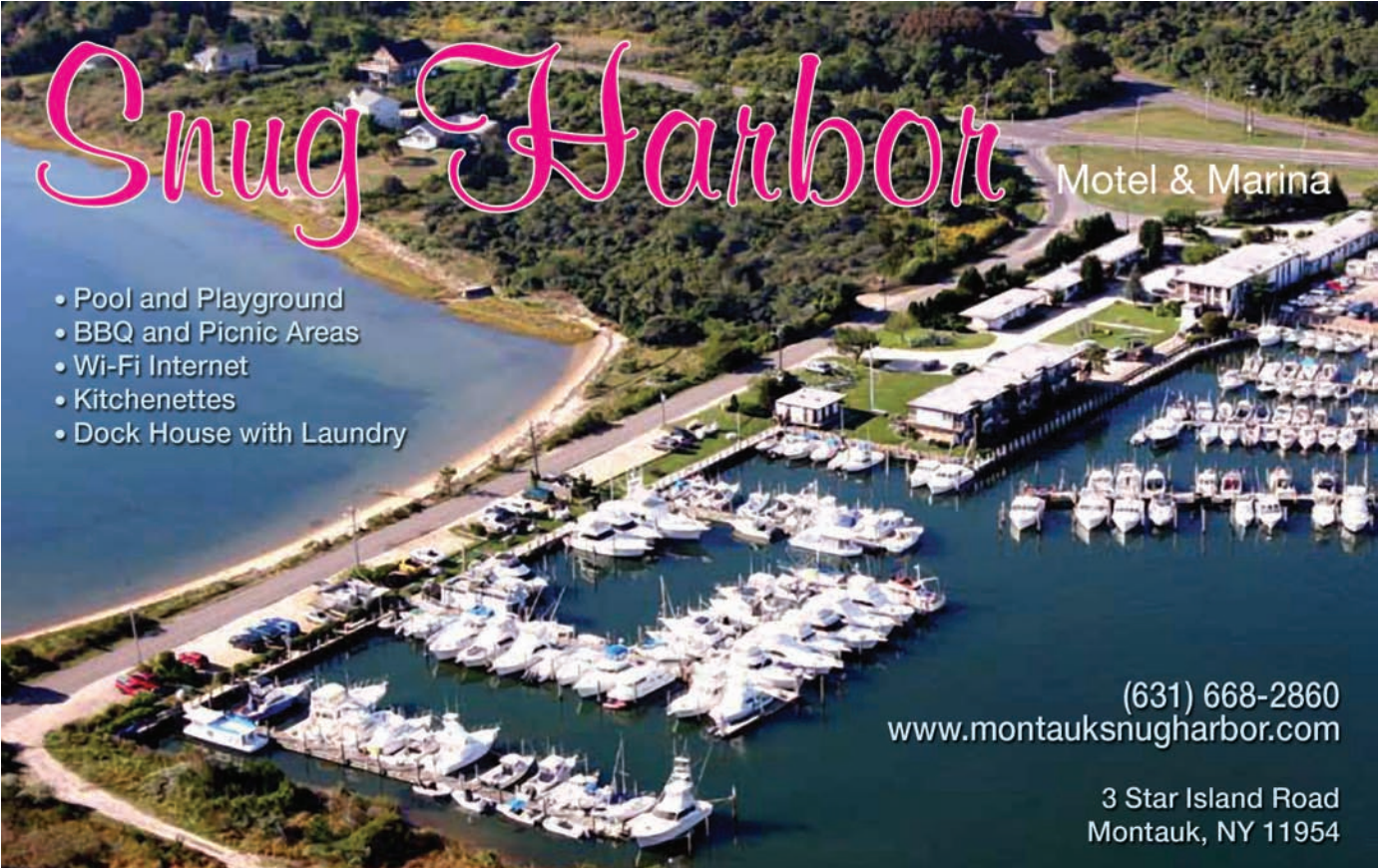
Got your clubs aboard? Try the 18-hole golf course at

Montauk Downs State Park (631-668-1234). If you're better at the short game, try miniature golf at **Puff & Putt** (631-668-4473) in the village. The "Puff" part rents small sailboats and Hobie Cats (as well as kayaks and pedal boats) on Fort Pond. **Fort Pond**, by the way, is one of the two lakes on Long Island where you can catch walleye, the other being Lake Ronkonkoma, about 50 miles "up island."

With scores of world-record catches landed in the ocean waters around the lighthouse, Montauk regards itself as the sportfishing epicenter of the Northeast. If big game (like tuna, marlin, and shark) hooks your interest, consider booking a private charter for a run offshore. You'll find at least 60 charter boats docked at **Star Island Yacht Club** (631-668-5052). Be there at 4 p.m. when the crews return with the day's catch. Or try your luck aboard a party-fishing boat. It can be a little more crowded, but you can swap tales with other fishing enthusiasts on the **Viking Fleet** (631-668-5700), **Lazy Bones** (631-668-5671) or **Miss Montauk** (631-668-1545), all of which offer full- and half-day adventures.

Shallow areas of Lake Montauk and Napeague Harbor are havens for kayaking and windsurfing. **Plaza Surf & Sports** (631-668-9300) rents everything you'll need for seaside fun: bicycles, mopeds, kayaks, surfboards, skimboards, beach chairs, and umbrellas. **Air & Speed Surf Shop** (631-668-0356) gives private lessons to those who want to learn how to hang ten.

Beachcombers can let it all hang out here. On the north



Snug Harbor Motel & Marina

- Pool and Playground
- BBQ and Picnic Areas
- Wi-Fi Internet
- Kitchenettes
- Dock House with Laundry

(631) 668-2860
www.montauksnugharbor.com

3 Star Island Road
Montauk, NY 11954

Montauk and Napeague Harbors

shore, the Block Island Sound beaches are generally rocky, while the Atlantic Ocean beaches on the south side feature smooth, sandy stretches that are fun for walking and swimming. Expect a good number of surfcasters on Montauk Point's rocky beachfront, each of them hoping to pull in a big striper. On **Ditch Plains Beach**, you'll find the surfers, while families find their way to the gentler shores of **Gin Beach**.

Nature enthusiasts will find no shortage of walking trails through Montauk's impressive parks system. Grab a trail map, plus some reading material, at **Montauk Book Shop** (631-668-4599).

The walking dunes at **Hither Hills State Park** are a magical place and well worth the effort of getting a ride out of town. Visit during September and October and you can sample the wild cranberries that grow in the small bogs between the largest dunes. As for the sandy ocean beaches on Montauk's south side, they rate among the best on the eastern seaboard.

Restaurants and Provisions

Montauk Harbor

Waterfront dining is easy to come by along the shores and docks of Lake Montauk. At **Westlake Marina** you'll find the wonderful **Fish House** (631-668-3474).

The **Clam & Chowder House** restaurant, meanwhile, has relocated to nearby **Salivar's Dock** (631-668-6252). Sushi and other seafood are popular here; there can be a wait, but it's worth it.

Guests at the **Montauk Yacht Club Resort & Marina** might want to make a reservation at the **Gulf Coast Kitchen** (631-688-3100). If you're staying at the **Star Island Yacht Club** (631-668-5052), you also needn't go far for food: The casual **Star Deck Grill** offers breakfast, lunch, and dinner. Catch the day's end with sunset, an exotic cocktail, and some fresh fish.

At Offshore Sports Marina, you won't find a bite to eat but you'll hear all about what's biting at the on-site **Liams' Saloon** (631-668-9597), a haven for local fishermen.

One of the few places around the harbor that's open early is **Gaviola's Montauk Market** (631-668-1031), across from Viking Dock; it has all your usual provisions plus a deli and an ATM. **Four Oaks General Store & Bakery** (631-668-2534), another early opener, sells fresh bread, pastries, and other baked goodies to take back to the boat. You'll find Four Oaks at West Lake Drive and Flamingo Road, a half mile from Gosman's Dock.

At family-owned **Gosman's Restaurant** (631-668-5330) you can nosh on seafood, including shore dinners and sashimi, as well as portobello mushrooms, meat entrées, salads, bisque, and two kinds of chowder. Also in Gosman's complex, the **Inlet Café** (631-668-2549) and Topside Bar offer similar fare, while Gosman's Clam Bar serves steamers, lobster rolls, grilled fish filets. There's even a fish market/gourmet grocery on site.

Next door, at the base of a commercial dock, **The Dock** (631-668-9778) is another fishermen's hangout, and the

prices here are reasonable. For a memorable dinner on the water, head to **Dave's Grill** (631-668-9190). A more casual good time can be had at **Swallow East** (631-668-8344), adjacent to Salivar's Dock.

Over on the east shore of Lake Montauk near **Gone Fishing Marina**, you'll find family-friendly **Rick's Crabby Cowboy Café & Marina** (631-668-3200), a place that's as fun as its name. They open at noon for soups, sandwiches, and seafood appetizers, with some additional choices available at dinner time. Dockage is free for dinner guests. Gone Fishing Marina also has an on-site restaurant, **Fishbar** (631-668-6600). Their Mediterranean-inspired seafood menu is a must-try, and their brunch will not let you down either. If you'd prefer a grab-and-go breakfast, they'll serve you up something fresh at 5:45 a.m. If you want fish as fresh as right off the boat, set a course for **Inlet Seafood Restaurant** (631-668-4272) opened in 2006 by six commercial fishermen.

At the southern end of Lake Montauk, the **Crow's Nest Restaurant** (631-668-2077) is open seasonally, emphasizing Long Island's local, fresh, organic fare with nightly fire pits and sunset views. Many sailors anchor in the lake, dinghy to the beach and walk up to the restaurant.

Montauk Village

You'll find the **Montauk Chamber of Commerce** (631-668-2428) an excellent source of help when planning a visit to Montauk, but this town is laid out nicely and finding a place to eat or shop is never much of a hassle. The popular **Shagwong Restaurant** (631-668-3050), in the center of Montauk Village, has been open since 1969. They serve the requisite seafood — cooked and on the half-shell — as well as steaks, chops, and rack of lamb. For great Irish pub fare, look no farther than **O'Murphy's Pub** (631-668-5005), and try one of their burgers.

Near Fort Pond Bay, if you're looking for lobster, **Duryea's Lobster Deck** (631-668-2410) has long been a favorite. Duryea's dates back to the times when Montauk village centered around Fort Pond Bay, and lingering on their deck will make for a good summer memory.

Fine dining is the specialty at both **East by Northeast** (631-668-2872) and its sister restaurant, **Harvest On Fort Pond** (631-668-5574) — reservations are suggested.

Late risers don't have to worry about missing breakfast, because it's served all day at a few fixtures in town. **Mr. John's Pancake House** (631-668-2383) serves exceptional doughnuts, huge omelets, burgers, chowder, and lox and bagels.

It's easy to find supplies in the village, where numerous specialty stores are just a short taxi or bus ride from the harbor. Try **Bliss** (631-668-8206) on Main Street, **Herb's Market** (631-668-2335), or the **IGA** (631-668-4929) on Montauk Highway.

Charts

Use Maptech ChartKit Region 3, pages 9 and 37; Maptech Waterproof Chartbook *Long Island Sound*; Maptech Waterproof Charts 1 and 6; NOAA chart 13209 (1:40,000 and 1:7,500).

Montauk and Napeague Harbors

Tides and Currents

Use tide tables for New London. High tide at the Montauk Harbor entrance is 24 minutes earlier, while low tide is 16 minutes earlier than at New London. The mean tidal range is 1.9 feet. You can also find Montauk tide tables at www.montauk-online.com.

Navigation and Anchorages

Do yourself a favor and reserve a slip or mooring, especially on a weekend; Lake Montauk is very busy on summer weekends. It can be an awfully long trip to get there, so be sure you have a place to dock, anchor, or moor.

Montauk Point Light (Fl 5s 168ft 18M HORN), a white and brown structure on the eastern end of Montauk Point, stands beside a simple, white building and a two-story, shingled keeper's house, plus a World War II machine-gun tower. If you're coming in from the east at sunrise, you'll notice that the point's dramatic cliffs take on a bright, reddish hue, which is due to their high iron content.

On the north side of the point is a shoal area that extends about 4 miles to the northwest, on which tidal rips develop and waves break.

On the ebb, westbound sailors heading for Montauk Harbor may find the going slow, as they will be fighting the current and waves.

From G "7SR" Fl G 2.5s BELL marking Shagwong Reef, a southwest course will take you to RW "M" Mo (A) BELL just off the entrance to Montauk Harbor. If you have a deep-draft vessel, swing wide of Shagwong Reef before heading for the entrance.

Enter Montauk Harbor between two stone breakwaters marked by Fl R 2.5s 36ft 5M "2" on the west breakwater and Fl G 4s 33ft 4M "1" on the east breakwater. While the current at the harbor entrance is evident — generally 1 to 2 knots — it diminishes dramatically inside. The channel carries a reported depth of 12 feet in the middle but decreases to 9 feet along the edges. Since Montauk is a busy fishing town, watch out for local fishing boats on the move at all hours. The 5-mph harbor speed limit is strictly enforced.

After passing through the breakwaters, you'll see **Star Island** dead ahead, connected to the mainland by a causeway.

The Coast Guard station is on the northern end of the island, next to a town dock where commercial fishing boats tie up. On the mainland to the west you'll find a concentration of marinas, restaurants, motels, and charter boats. Follow the privately marked channel, which has a reported depth of 9 feet.

From north to south, visiting boaters will have plenty of options. **Uihlein's Marina** (631-668-3799) has been at the same location for more than 50 years. **Montauk Marine Basin** (631-668-5900) has a full-service yard. Nearby is the friendly **Westlake Marina** (631-668-5600), where you'll find lots of sportfishermen and a well-stocked shop for bait and tackle. Their knowledgeable crew will be happy help you arrange a fishing charter.

The family-friendly **Snug Harbor Motel & Marina**




Montauk Point Light features a World War II-era machine-gun tower.

WESTLAKE MARINA

"Montauk's Friendliest Marina"

Home to 17 of Montauk's Finest Sportfishing Charter Boats
Book a Fishing Trip through our Charter Service



- Seasonal and Transient Dockage Available up to 45 feet
- Fully Stocked Tackle Shop • All Inshore and Offshore Baits
 - Bulk Ice • Live Eels

Westlake Fish House
Breakfast, Lunch, and Dinner • 631-668-3474 • www.westlakefishhouse.com
Indoor and Outdoor Seating with Patio, Bar, and Fresh Sushi

631-668-5600 • www.westlake-marina.com
352 W. Lake Drive • Montauk, NY 11954

Montauk and Napeague Harbors

© SHORELINE AERIAL PHOTOGRAPHY



Montauk Point Lighthouse is the oldest in the state of New York.

(631-668-2860) features a nice swimming pool and playground. Clean up with hot showers and laundry services, and if you need time to relax off the boat, there is a dry bed with your name on it in the adjacent motel.

Across the channel, on the west side of Star Island, is the excellent **Star Island Yacht Club** (631-668-5052). The fuel dock and ship's store are conveniently open at 5 a.m. for anyone setting off early in the morning.

Just east of the Coast Guard station on Star Island is the **East Hampton Town Pumpout Station**. The free pumpout, available April to November, is self-service. Boats nearing 40 feet long and drawing 4 feet or more should steer in bow first at the end of the floating dock, where the depth is 8 feet. Where the floating dock meets a fixed dock, the depth shoals up to a range of 3 to 4 feet.

The most conspicuous landmark on the eastern side of Star Island is the lighthouse tower of the **Montauk Yacht Club Resort & Marina** (631-668-3100). This well-appointed facility includes great amenities, along with a full-service spa. You and your boat will be pampered here.

If you're heading for one of the marinas on the eastern side of **Lake Montauk** or to the designated anchorage area, pass on the east side of Star Island. Stay close to the island to avoid the sandbar (marked by G C "3," G C "5," and G C "7") that reaches out from the shore of the mainland. Another shoal area looms southeast of G C "7."

Be aware that part of Lake Montauk south of Star Island is a popular area for waterskiing, so keep your eye out for fast-moving vessels and fallen skiers.

The channel to the anchorage area is clearly marked. ⚓ Stay in the middle, as there are some shallow spots — as low as 3 feet — just off the buoys. The East Hampton Bay Constable reports that the channel has more depth than reported on the chart, but if you have any doubts, hail him on VHF 16.

CAUTION: The southern half of Lake Montauk, south of G C "7," has shoaled up to less than the 8 feet reported on the NOAA chart. The harbormaster warns against anchoring in this shallow area unless your draft is minimal.

If you are looking for a quiet and deep anchorage, head for **Fort Pond Bay**, 3 miles west of Montauk Harbor. From G "7SR" Fl G 2.5s BELL, take a 4-mile southwest course; swing wide of Shagwong Reef and Culloden Point before turning south into the bay. The original Montauk Village was located here before its destruction in a 1938 hurricane. Much of the area is private property.

The beach is small, and there are no lifeguards; however, **Navy Beach Restaurant** is on the beach (631-668-6868). It can be reached by car, or take your dinghy to the beach. Montauk Village is about 1.5 miles south by foot or taxi.

Napeague Harbor

Montauk is a busy port, bustling with big boats. **Napeague Harbor** is not. Save for a few misleading trout stakes and "Tick Infested Area" signs, you'll find little help in the way of markings as you make your way toward the shore. The approaches are extremely shallow and tight and no anchoring

Montauk and Napeague Harbors

is allowed. Visit only in a small boat, and only on a rising tide.

Approaching from the west, follow the buoyed passage south of Gardiners and Cartwright islands. Tidal velocity in the channel averages about 1.5 knots.

Approaching from the east or west, wait until you're at least 400 yards southwest of R N "2" before heading toward the entrance. It is very shallow off Goff Point, so don't try to enter from the north. The harbor's mouth is marked by a large sign that reads "No Anchoring" in no uncertain terms.

CAUTION: The currents in and out of this harbor are strong and should not be underestimated; in an opposing wind they can be downright hellacious. Be ready to compensate quickly when making the turn.



The Montauk Yacht Club offers pampering for your boat and crew.

If your boat draws less than 4 feet, you can enter on a rising tide, but keep at least 125 feet from shore and follow the shore's curve. Even under the best conditions, the channel is less than 12 feet wide, so don't push your luck. You'll know you've successfully reached this secluded site when you see the markers for shellfish hatcheries.

Keep your speed down when entering the harbor, and cautiously feel your way through the 4-foot-deep channel, turning hard to the east when going around the sandbar.

There's another entrance on the west side of **Hicks Island**, which has shoaled to a depth of less than 4 feet. The channel is very narrow and, as the tides change, the current is swift. The entrance is mainly for local boaters who use the town ramp on Lazy Point. It is best to enter here at half or full tide.

The bottom contours on the chart for Napeague Harbor are not entirely in accordance with the actual depth, so if you have a depth sounder on board or a spare hand to watch the bottom from the bow, use them. This is a great place to swing the lead line. Once inside, you'll find shoals and marsh to the west. Stay at least 200 yards off the eastern shore for plenty of deep water.

Acabonack Harbor, just west of Cartwright Island, has a narrow channel with privately maintained markers. You'll be making your turn about 800 yards northwest of R N "8," taking care to watch for the rocks near the entrance. The channel is 2.5 feet deep, but there is more water inside. Keep a sharp eye as you pass in and out of this little harbor as it is a favorite area of local kayakers.

Shoreside and Emergency Services

Airport: Montauk 631-668-3738

Bus: Suffolk County Transit 631-852-5200

Coast Guard: Montauk 631-668-2773 or VHF 16

Ferry: Viking Fleet (Block Island, Martha's Vineyard & New London) 631-668-5700

Harbormaster: 631-329-3078

Taxi: Lindy's Taxi 631-668-8888

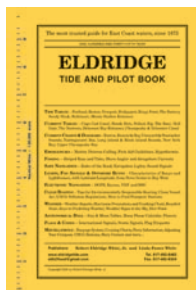
Train: Long Island Railroad 631-231-5477

Tow Service:

—Sea Tow 800-4SEATOW or VHF 16

—TowBoatU.S. 800-391-4869 or VHF 16 ♦

Eldridge Tide & Pilot Book

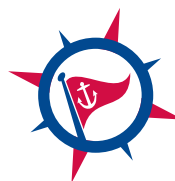


CURRENT EVENTS

and so much more...
since 1875

ebb2flood@gmail.com
617-482-8460

Marine Services That'll Really Float Your Boat!



MARINE
SPECIAL PRODUCTS GROUP

Comfort, Confidence & Convenience | Emergency Services Available
Marine Air Conditioning, Sanitation & Electronics

860-718-0100 | PO Box 31, Essex, CT 06426 | marinespecialproducts.com